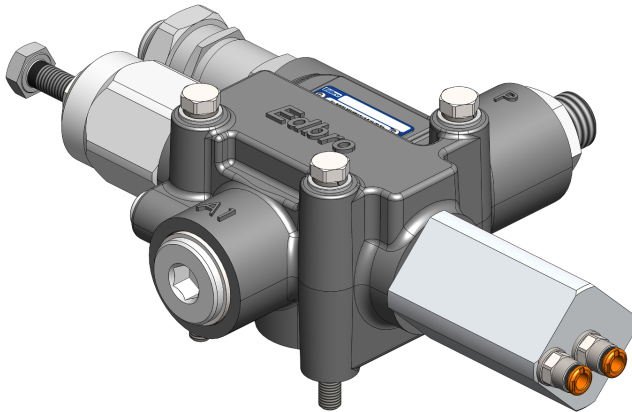


Hydraulic Valves:

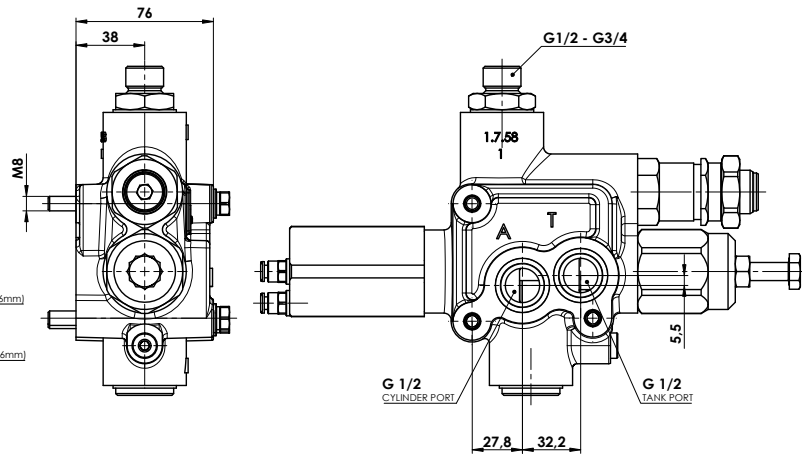
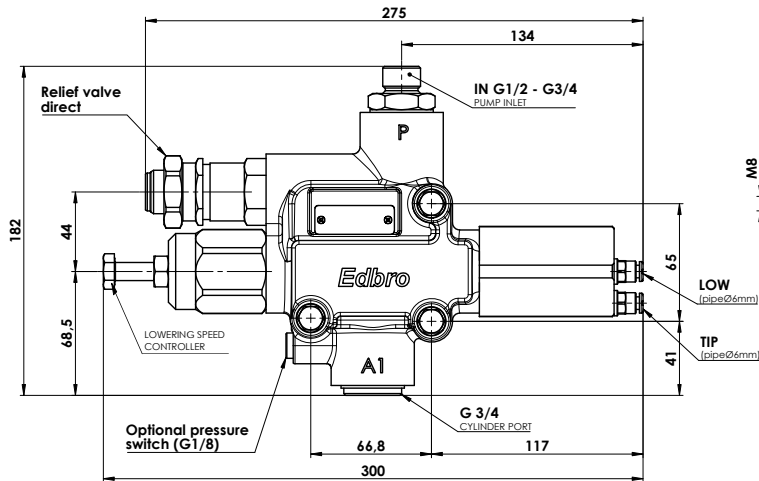
UT085xxxxPxxx



Hydraulic Control Valve for Tipper Applications - UT085xxxxPxxx



- Fully proportional - excellent lowering control when loaded
- No system filtration required
- High flow capacity for reduced cycle times
- Compact and lightweight
- Interchangeable with previous CT valve range
- Multiple mounting options
- Pressure switch point provided
- Single pressure relief valve cartridges available



Weight: 5.2KG

Part number

UT085

Pump Inlet

050 075

M = 6mm air
E = 1/4" mm air

050 = 1/2" BSP
075 = 3/4" BSP

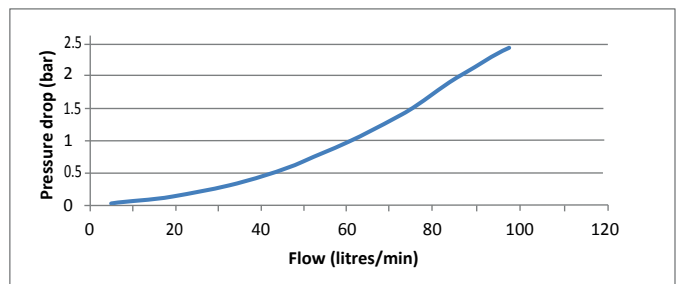
Pressure (Bar)

P 150 175 000

Pressure setting 150, 175
No cartridge fitted 000

Performance

Max working pressure	250 bar
Peak pressure	350 bar
Max pump flow P>A	90 Litres
Rated return flow A>T	85 Litres
Maximum back pressure A>T at this flow (viscosity=15 cSt)	2 bar



Hydraulic Valves:

UT085xxxxPxxx



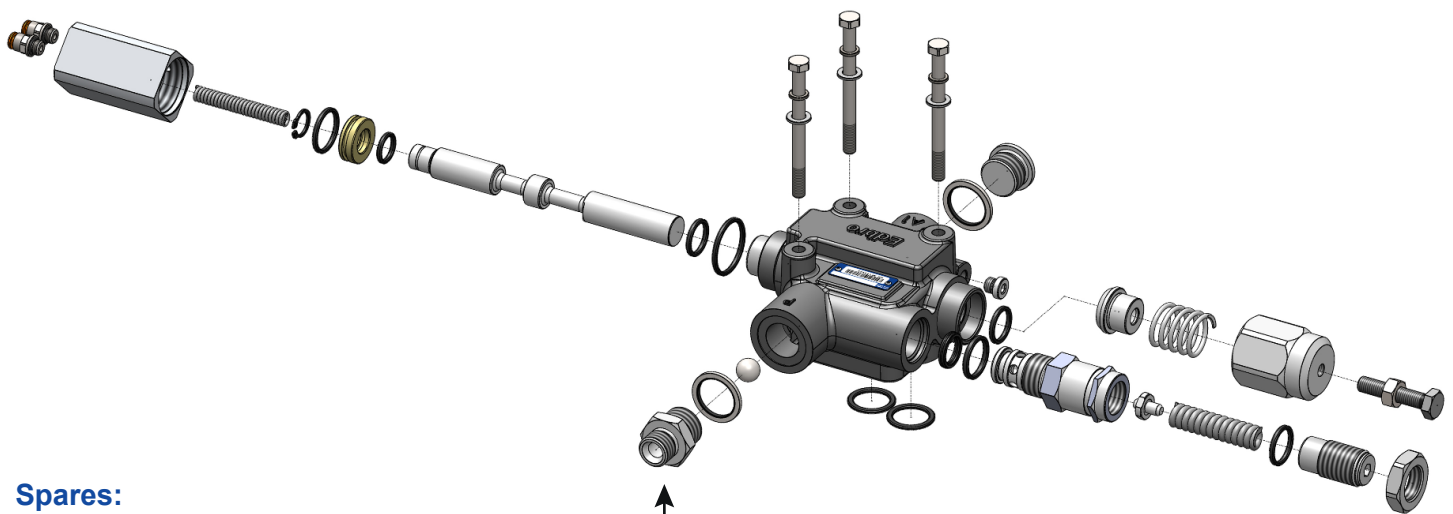
Hydraulic Control Valve for Tipper Applications - UT085xxxxPxxx

Oil & Filtration

- This valve is designed for tipper systems without filtration.
- The oil should be a good quality hydraulic oil to ISO 6743/4 HM32 for -15 to +80C working temperature.
- For extended life or for higher duty applications 60µm absolute return line filtration is recommended.
- Oil cleanliness to be maintained to ISO 4406 class 19/16.
- Oil should be replaced annually.

Component	Description	Part Number
Independent Remote Valve Mounting Kit	Port "A1" Hose connection 1/2" BSP	Port "T" Hose Connection 1/2" BSP AK91
	3/4" BSP	
Body Raised Warning Kit	Kit Includes (Switch 1/8" BSP, Washer, Cover, Lamp, Buzzer, Cable)	SA2924
Pressure Switch	DIN 72 585-A1-2.1-Sn/K2 Connector	PM544

Spare parts



Spares:

- Seal kit SKUT 085
- Mounting-Kit KFD003
- Bolts, washers, Incl mounting 'O' Rings.

↑
Pump Inlet
1/2" BSP NR1700
3/4" BSP NR1675