

Solenoid - spring (Self-feeding)

3/2
5/2

Ordering code

T488.1.0.1.V

TYPE

32 = 3 ways
52 = 5 ways

VOLTAGE

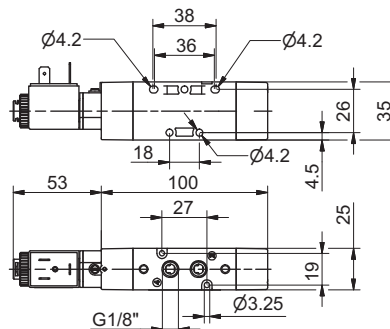
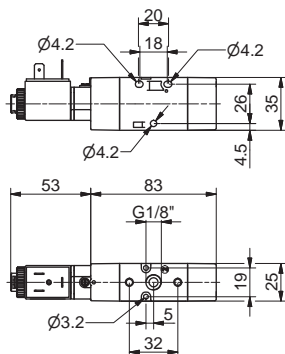
M9 = 24 V D.C. (rating power 2 W)

M11 = 24 V D.C. (rating power 3,8 W)

M56 = 24 V 50/60 Hz (starting power 9 VA, rating power 6 VA)

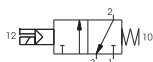
M57 = 110 V 50/60 Hz (starting power 9 VA, rating power 6 VA)

M58 = 220 V 50/60 Hz (starting power 9 VA, rating power 6 VA)



Weight gr. 160
Minimum working pressure 2,5 bar

Weight gr. 190
Minimum working pressure 2,5 bar



Operating Characteristics

Fluid	Max working pressure (bar)	Temperature °C		Flow rate at 6 bar with Δp=1 (NI/min)	Orifice size (mm)	Working ports size
		Min. -5°C	Max. +50°C			
Filtered and lubricated air	10 bar	Min. -5°C	Max. +50°C	620 NI/min	mm 6	G 1/8"

Solenoid - spring (External feeding)

3/2
5/2

Ordering code

T488.1.0.1E.V

TYPE

32 = 3 ways
52 = 5 ways

VOLTAGE

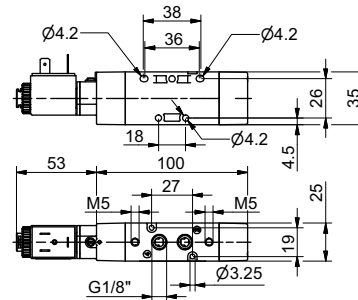
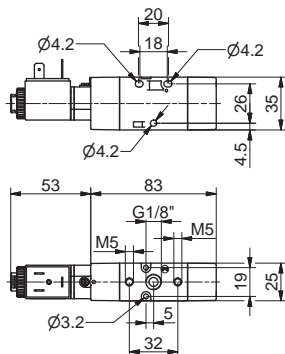
M9 = 24 V D.C. (rating power 2 W)

M11 = 24 V D.C. (rating power 3,8 W)

M56 = 24 V 50/60 Hz (starting power 9 VA, rating power 6 VA)

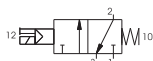
M57 = 110 V 50/60 Hz (starting power 9 VA, rating power 6 VA)

M58 = 220 V 50/60 Hz (starting power 9 VA, rating power 6 VA)



Weight gr. 160
Minimum working pressure 2,5 bar

Weight gr. 190
Minimum working pressure 2,5 bar



Operating Characteristics

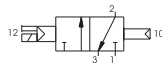
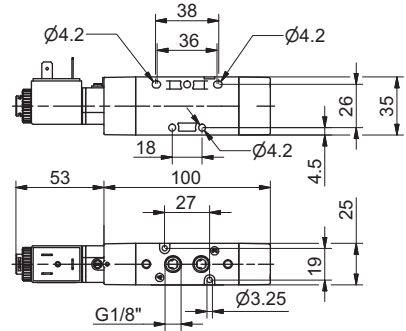
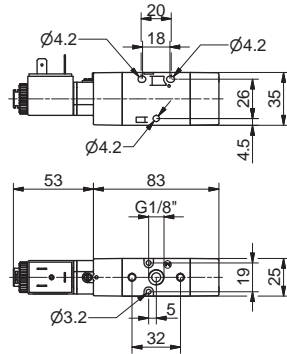
Fluid	Max working pressure (bar)	Temperature °C		Flow rate at 6 bar with Δp=1 (NI/min)	Orifice size (mm)	Working ports size	Pilot port size
		Min. -5°C	Max. +50°C				
Filtered and lubricated air	10 bar	Min. -5°C	Max. +50°C	620 NI/min	mm 6	G 1/8"	M5

2

3/2
5/2

Solenoid - Differential (Self-feeding)

Ordering code	
T488.Ⓡ.0.12.Ⓥ	
TYPE	
Ⓡ	32 = 3 ways 52 = 5 ways
VOLTAGE	
M9	= 24 V D.C. (rating power 2 W)
M11	= 24 V D.C. (rating power 3.8 W)
Ⓥ	M56 = 24 V 50/60 Hz (starting power 9 VA, rating power 6 VA)
	M57 = 110 V 50/60 Hz (starting power 9 VA, rating power 6 VA)
	M58 = 220 V 50/60 Hz (starting power 9 VA, rating power 6 VA)



Weight gr. 160
Minimum working pressure 2,5 bar

Weight gr. 190
Minimum working pressure 2,5 bar

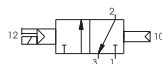
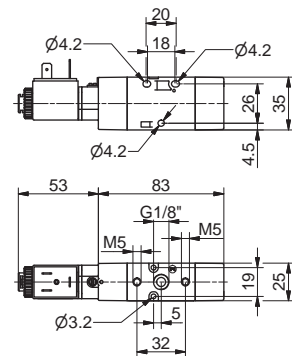
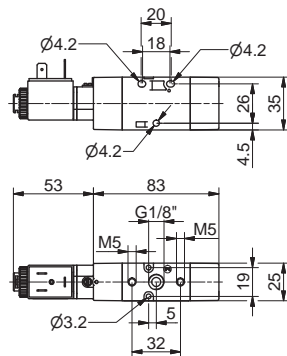
Operating Characteristics	Fluid	Max working pressure (bar)	Temperature °C		Flow rate at 6 bar with Δp=1 (NI/min)	Orifice size (mm)	Working ports size
	Filtered and lubricated air	10 bar	Min. -5°C	Max. +50°C	620 NI/min	mm 6	G 1/8"

2

Solenoid - Differential (External feeding)

3/2
5/2

Ordering code	
T488.Ⓡ.0.12E.Ⓥ	
TYPE	
Ⓡ	32 = 3 ways 52 = 5 ways
VOLTAGE	
M9	= 24 V D.C. (rating power 2 W)
M11	= 24 V D.C. (rating power 3.8 W)
Ⓥ	M56 = 24 V 50/60 Hz (starting power 9 VA, rating power 6 VA)
	M57 = 110 V 50/60 Hz (starting power 9 VA, rating power 6 VA)
	M58 = 220 V 50/60 Hz (starting power 9 VA, rating power 6 VA)



Weight gr. 160
Minimum working pressure 2,5 bar

Weight gr. 190
Minimum working pressure 2,5 bar

Operating Characteristics	Fluid	Max working pressure (bar)	Temperature °C		Flow rate at 6 bar with Δp=1 (NI/min)	Orifice size (mm)	Working ports size	Pilot port size
	Filtered and lubricated air	10 bar	Min. -5°C	Max. +50°C	620 NI/min	mm 6	G 1/8"	M5