



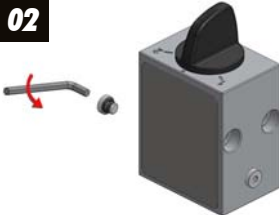
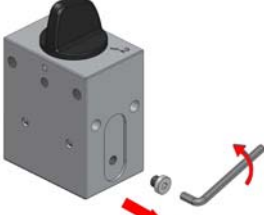

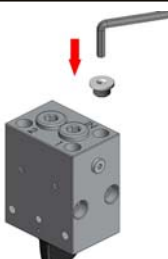
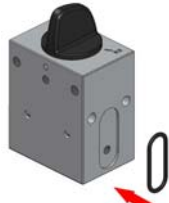
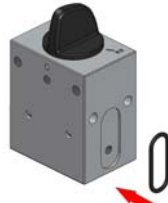

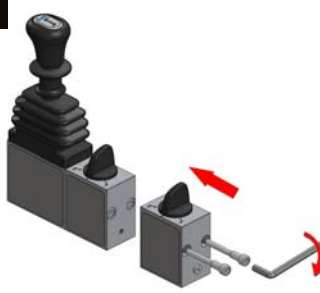


ISTRUZIONI ASSEMBLAGGIO COMANDI PNEUMATICI COMPONIBILI FITTING INSTRUCTIONS

CODICE
CODE

100-001-4

SERIE
SERIES

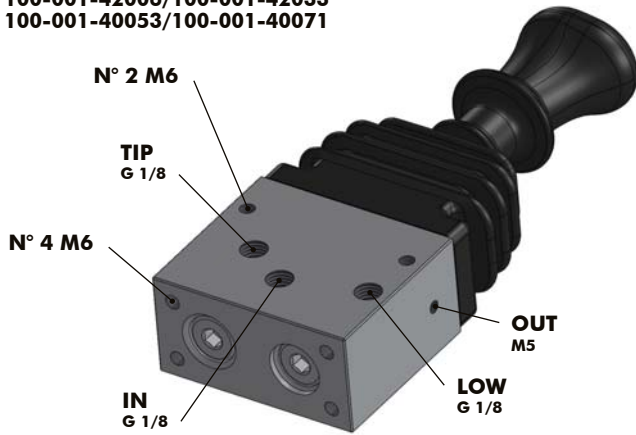
**COMPONIBILI
SANDWICH CONTROLS**

MONTARE UN PANNELLO MOUNTING OF A SINGLE PANEL		MONTARE PANNELLI SUCCESSIVI MOUNTING OF A SANDWICH PANELS	
01 	Rimuovere il tappo M5 con OR indicato in figura utilizzando una chiave da 2.5 mm. Remove the plug M5 with OR indicated in the figure using a 2.5 mm spanner.	01 	Rimuovere il tappo M5 con OR indicato in figura utilizzando una chiave da 2.5 mm. Remove the plug M5 with OR indicated in the figure using a 2.5 mm spanner.
02 	Rimuovere il tappo M5 con OR indicato in figura utilizzando una chiave da 2.5 mm. Remove the plug M5 with OR indicated in the figure using a 2.5 mm spanner.	02 	Rimuovere il tappo M5 con OR indicato in figura utilizzando una chiave da 2.5 mm. Remove the plug M5 with OR indicated in the figure using a 2.5 mm spanner.
03 	Chiudere il foro di ingresso (IN) utilizzando il tappo G 1/8 con OR incluso nella confezione. Close the (IN) hole using the plug G 1/8 with OR included in the package.	03 	Chiudere il foro di ingresso (IN) utilizzando il tappo G 1/8 con OR incluso nella confezione. Close the (IN) hole using the plug G 1/8 with OR included in the package.
04 	Applicare la guarnizione OR aiutandosi con del grasso. Apply the O-ring using grease.	04 	Applicare la guarnizione OR aiutandosi con del grasso. Apply the O-ring using grease.
05 	Bloccare il pannello all'unità principale utilizzando le viti speciali incluse nella confezione. Fare molta attenzione alla corretta posizione dell'OR prima di serrare le viti. Secure the panel to the main unit using the special screws included in the package. Make sure the O-ring is positioned correctly before tightening the screws.	05 	Bloccare il pannello all'unità principale utilizzando le viti speciali incluse nella confezione. Fare molta attenzione alla corretta posizione dell'OR prima di serrare le viti. Secure the panel to the main unit using the special screws included in the package. Make sure the O-ring is positioned correctly before tightening the screws.
06 	Verificare il corretto funzionamento prima di collegare il tutto all'impianto. Check to ensure correct operation before connecting the assembly to the system.	06 	Verificare il corretto funzionamento prima di collegare il tutto all'impianto. Check to ensure correct operation before connecting the assembly to the system.

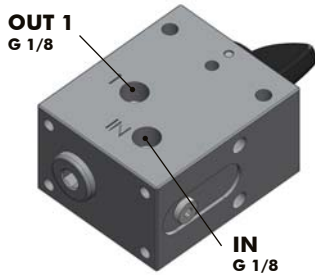
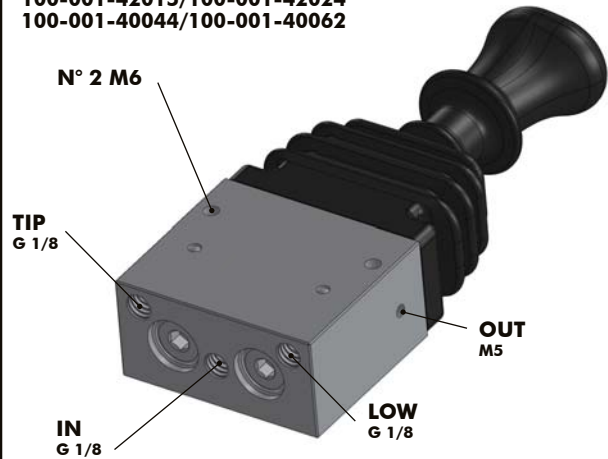
Data: Mercoledì 3 gennaio 2018

Codice foglio: 997-100-14010 Rev: AH

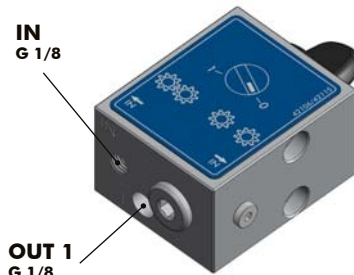
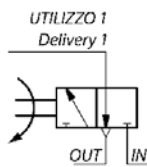
100-001-40008/100-001-40035
100-001-42006/100-001-42033
100-001-40053/100-001-40071



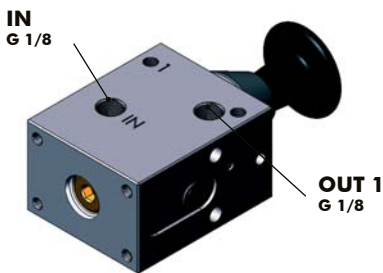
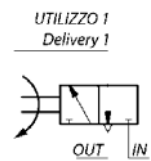
100-001-40017/100-001-40026
100-001-42015/100-001-42024
100-001-40044/100-001-40062



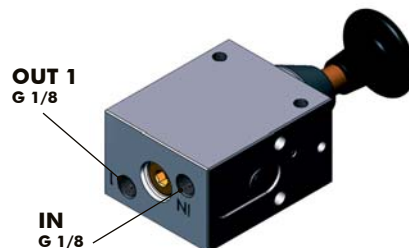
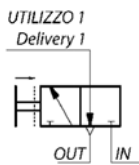
100-001-42106



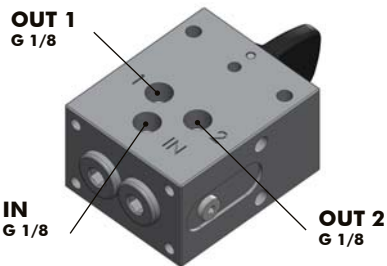
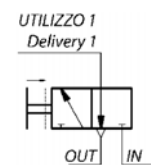
100-001-42115



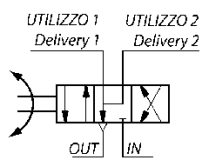
100-001-40151



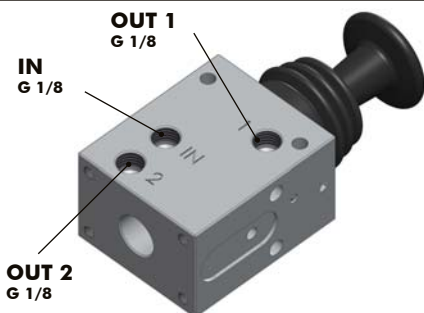
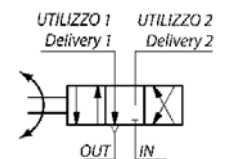
100-001-40160



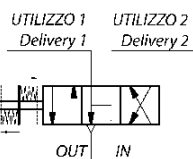
100-001-42204



100-001-42213



100-001-42259



100-001-42268

