

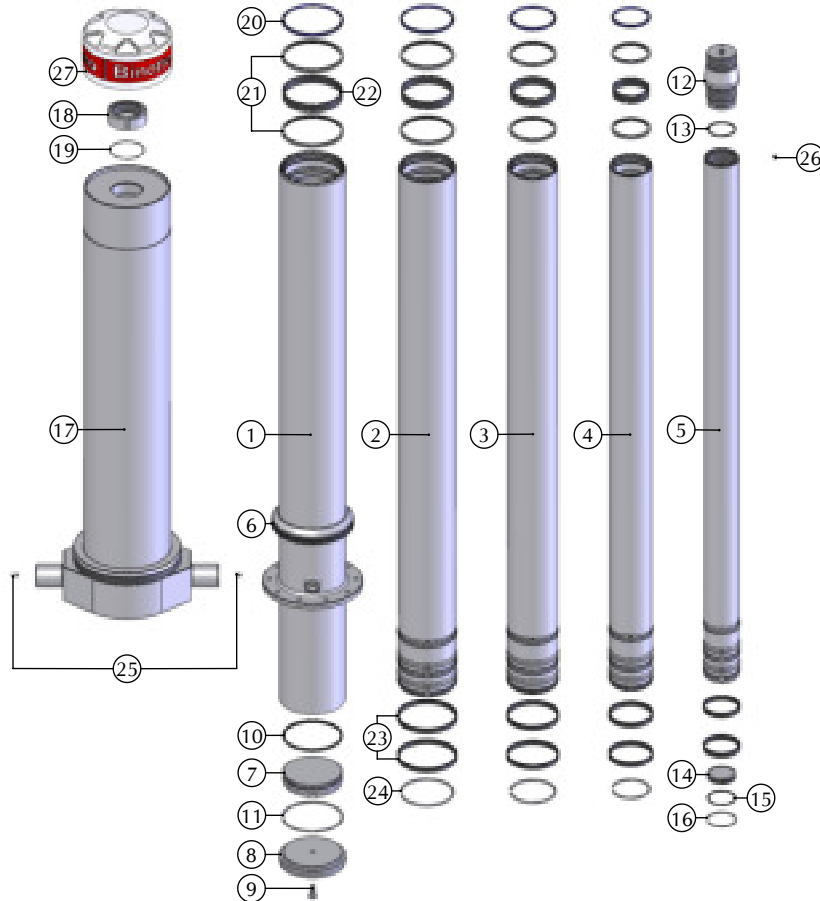
TYPE : TFC

SERIE : Ø145

CYL. CODE TFC#M04514004607NH1

CYL. TYPE TFC 145/4/5140-D = 505-F|g.Ø252x15-G. -
Outer cover Ø219 Sp.A = 320

Technical Characteristics



Part list			
Item	Part number	Description	Q.ty
1	ESTM#N1542N7NNNF4NNNNNN1	Base tube MF Ø168 x 1542 - Flg.Ø252x15-H = 1212-MNC.3/4"	1
2	SFSE#M1500NNTN0	Stage Ø145 x 1500 c.b.	1
3	SFSE#L1500NNBN0	Stage Ø126/107 x 1500 c.b.	1
4	SFSE#I1500NNAN0	Stage Ø107 x 1500 c.a.	1
5	SFSF#H1503GDNN0	Stage Ø88 x 1503 M72x2	1
6	GCL#C	Anti-rattle slider Ø206x196x12,5 x outer cover Ø 219	1
7	FIE#EC	Bottom Ø150x35 x base tube Ø168	1
8	CPF#TD	Bottom cover Ø170/150x30 - TFC Ø168	1
9	VITE#TCM12ABB	Screw TE M12 x 25 + Rond. - Zn.B. - [Promofren]	1
10	GDS#N	Bottom O-ring Ø149,9x141,4x7[Ø168]	1
11	AFE#N	Stop ring Ø155/5 x st.Ø165	1
12	TSC#HN	Conical top head M75x2-st.Ø88-M75x2	1
13	ORS#H	O ring 331-6225 Ø56,52x5,33x top head MFØ88	1
14	FIS#GD	Bottom Ø71,8x13 x St.Ø88	1
15	ORFS#H	GDS 840 x internal St.Ø88	1
16	AFI#AD	Stop ring Ø4xe80xa20 x St.Ø88	1
17	CAPP#N1180JMM0	Outer cover Ø219 x 1160(1180)/A = 320-P. Ø60 x 50-Spec.	1
18	GHI_M75-2-35B	Top nut M75x2x35 Z.B.	1
19	ORGH_01	Top nut O-ring type 152-3325(Ø82,22x2,62)	1
20	SRRAS#04N	Wipers kit 4/ 168	1
21	SRPU#04N	Pu seals kit 4/ 168	2
22	SRGSD#04N	Upper sliders kit 4/ 168	1
23	SRDWR#04N	Lower sliders kit 4/ 168	2
24	SRAFE#04N	Complete snap rings 4/ 168	1
25	INGR#00B	Greaser 00° - M8x1.25 - Zn.B.	2
26	GRANO_M8x10	Screw T-8x10 Z.B. - 55106	1
27	COP#W	Plastic cover for outer cover Ø219	1

Complete seal kit	
KCR#04NB1	Complete seal kit for cyl. 4 / 168 - N°2 DWR+ GDS

BINOTTO SRL

BINOTTO IS CONSTANTLY ENGAGED IN IMPROVING ITS PRODUCTS AND THEREFORE RESERVES THE RIGHT TO MODIFY WITHOUT ANY NOTICE CHARACTERISTICS SHOWN

VIA DIVISIONE JULIA, 7/B - 36031 DUEVILLE [VI] ITALY • TEL. 0039.0444.593290 - FAX. 0039.0444.593357 • E-MAIL. INFO@BINOTTO.COM

Date: 02/09/2016

Rev: 01/2009