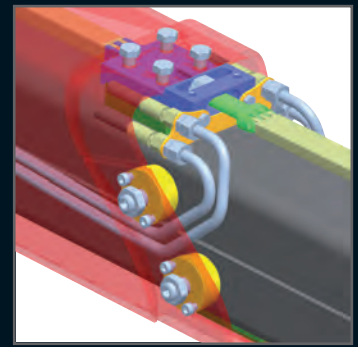




**CONSTRUCTION**

**EPSILON PALFINGER**

DESIGNS THE DIFFERENCE



**EPSCOPE**



**EPSLINK**



**E-ARC**

## *Evolution the Professional's Choice*

### **EPSCOPE**

- Patent applied for double telescope with extension cylinder and hose equipment mounted inside protected

### **EPSLINK**

- Patent applied for link – rotator combination
- Robust 4-eye link

### **E-ARC**

- Epsilon radio remote control for convenient and safe crane operation. Crane functions as well as stabilization to be operated via hand set. Safe load indicator with LED load indication integrated in hand set. Functions, as engine start/ stop, auto RPM, lights on/off and High Power Lifting System controllable from hand set.

#### **Standard Equipment - Construction Cranes**

**SCM** stand up with manual controls mounted on right side, valve Parker F130CF, 8 sections, single circuit

**SCRC** stand up with manual and radio remote control mounted on right side, valve Danfoss PVG32, 8 sections, single circuit.

Integrated stabilizer beam pointing towards rear, manually extendable outriggers, stabilizing width 3,9m

Stabilizer legs hydraulically operated from main valve bank

Stabilizer legs hydraulically operated from main valve bank and via radio remote control

Maintenance free double rack slewing system running in oil

Classification H1/B4

Main cylinder protection guard, rubber bump stop on outer boom, 2 spot lights, completely wired

KTL primer, RAL 3020 powder coating

**HPLS** High Power Lifting System

Emergency stop, load hold valves on main, outer, telescopic cylinder and slewing, over load protection, rated capacity indicator with LEDs für 50%, 75% and 100% load, boom above horizontal and legs not stowed warning, invisible safety case around operator's position

**BK057** Kinshofer 4,5t Rotator with flange, cpl. with Epslink knuckle set and hoses mounted, **BK011** mounting bolts kit, E33003 oil tank 140l

#### **Special Equipment**

**VÜ, TOG** stabilizer beam pointing towards front, slew stop above lorry cab

**SCL** secondary stand up mounted on left side, with cable controls, emergency stop, invisible safety case, ground controls

**TV** 180mm extended stabilizer plates

**RAL** special colour

**AZV** stabilizer legs 127mm diameter

**RX47, AX2** outriggers with 4,7m stabilizing width, separately hydraulically extendable

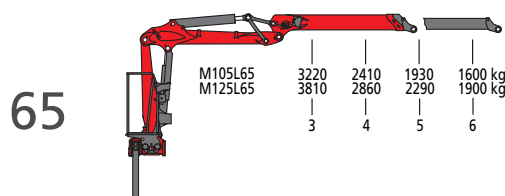
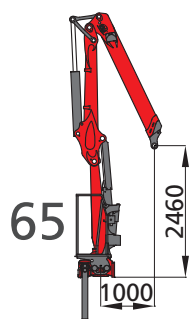
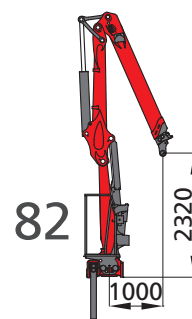
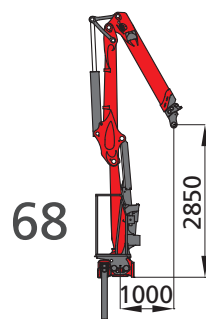
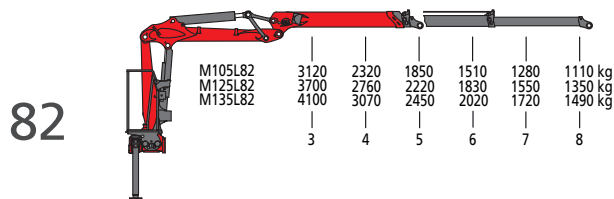
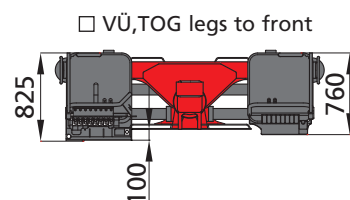
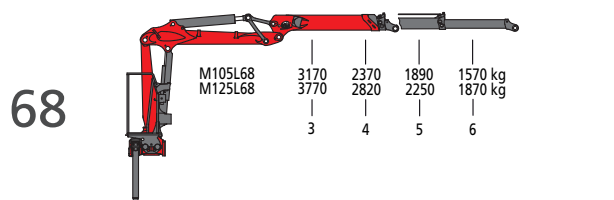
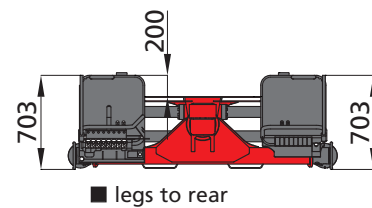
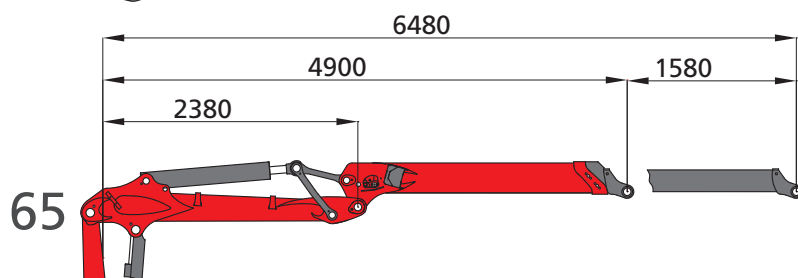
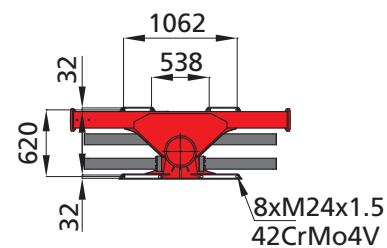
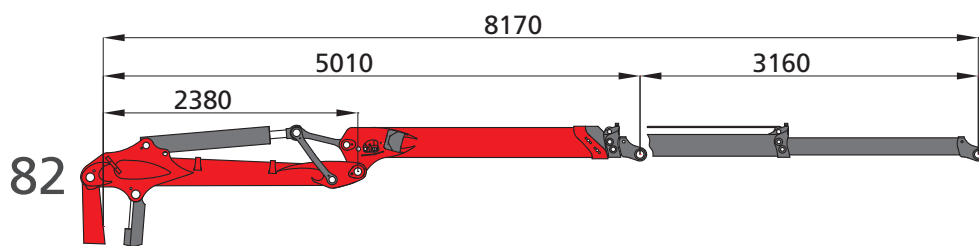
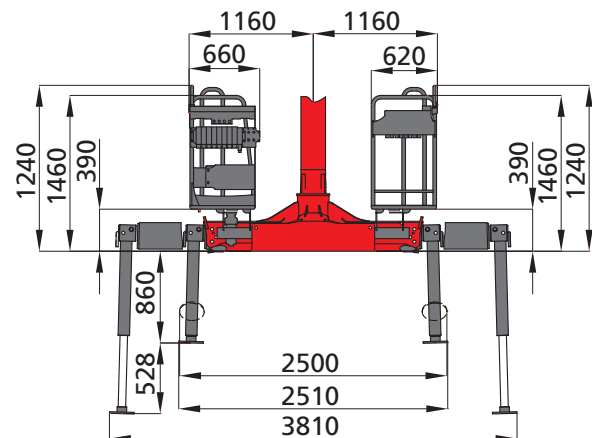
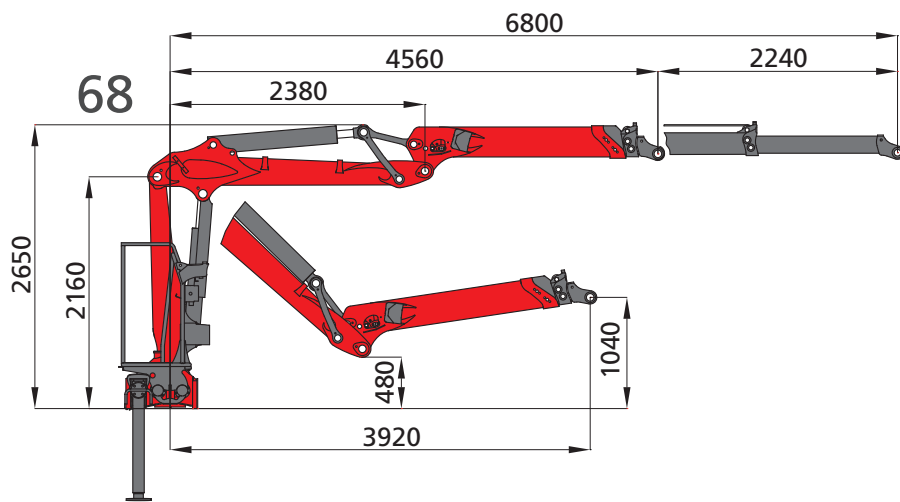
**CSGB** special control sequence

**SCRC** prepared for constant oil flow or variable displacement pump

**KP/ VP** ☐ KP constant ☐ VP variable

#### **M105L M125L M135L**

	M105L	M125L	M135L HPLS
SCM	■	■	■
SCRC	■	■	■
Integrated stabilizer beam	■	■	■
Stabilizer legs hydraulically operated from main valve bank	■	■	■
Stabilizer legs hydraulically operated from main valve bank and via radio remote control	■	■	■
Maintenance free double rack slewing system running in oil	■	■	■
Classification H1/B4	■	■	■
Main cylinder protection guard, rubber bump stop on outer boom, 2 spot lights, completely wired	■	■	■
KTL primer, RAL 3020 powder coating	■	■	■
HPLS High Power Lifting System	■	■	■
Emergency stop, load hold valves on main, outer, telescopic cylinder and slewing, over load protection, rated capacity indicator with LEDs für 50%, 75% and 100% load, boom above horizontal and legs not stowed warning, invisible safety case around operator's position	■	■	■
BK057 Kinshofer 4,5t Rotator with flange, cpl. with Epslink knuckle set and hoses mounted, BK011 mounting bolts kit, E33003 oil tank 140l	■	■	■
VÜ, TOG	□	□	□
SCL	□	□	□
TV	□	□	□
RAL	□	□	□
AZV	□	□	□
RX47, AX2	□	□	□
CSGB	□	□	■
SCRC	□	□	□
KP/ VP	□	□	□

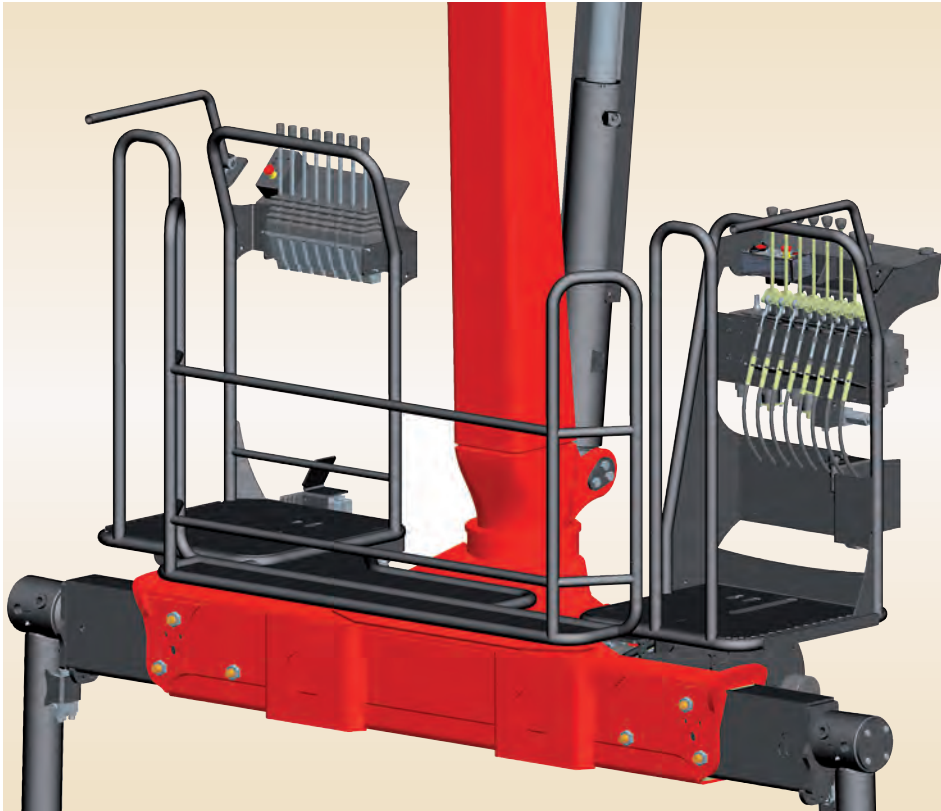


crane type		M105L			M125L			M135L
boom system		68	82	65	68	82	65	82
lifting moment net	[kNm]	95	94	97	113	111	114	123
slewing torque net	[kNm]	24			27			27
slewing angle	[°]	425			425			425
max. outreach	[m]	6,8	8,2	6,5	6,8	8,2	6,5	8,2
operating pressure	[bar]	260			250			250 (280 HPLS)
recommended pump capacity	1K [l/min]	1x60-70			1x60-70			1x60-70
	1K LS [l/min]	-			-			1x100
dead weight without link / rotator		1760 1840 1750			1800 1880 1790			1880

lifted weight, net without accessories

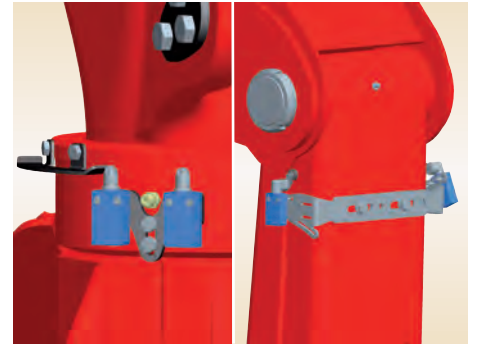


## Stand up controls manual

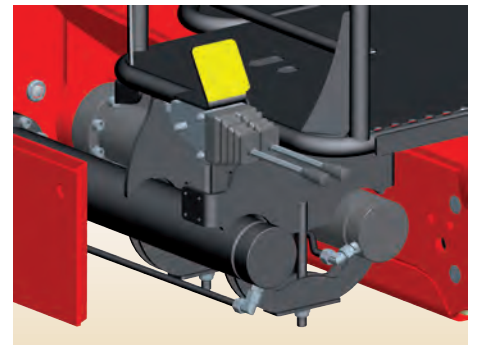


☐ SCL secondary stand up control with Catwalk, ground control operated with cable controls

■ stand up control M105L, M125L on the right side, with main valve bank, operated with 8 linear levers, load holding valves on main, outer and extension cylinders, hydraulic overload protection

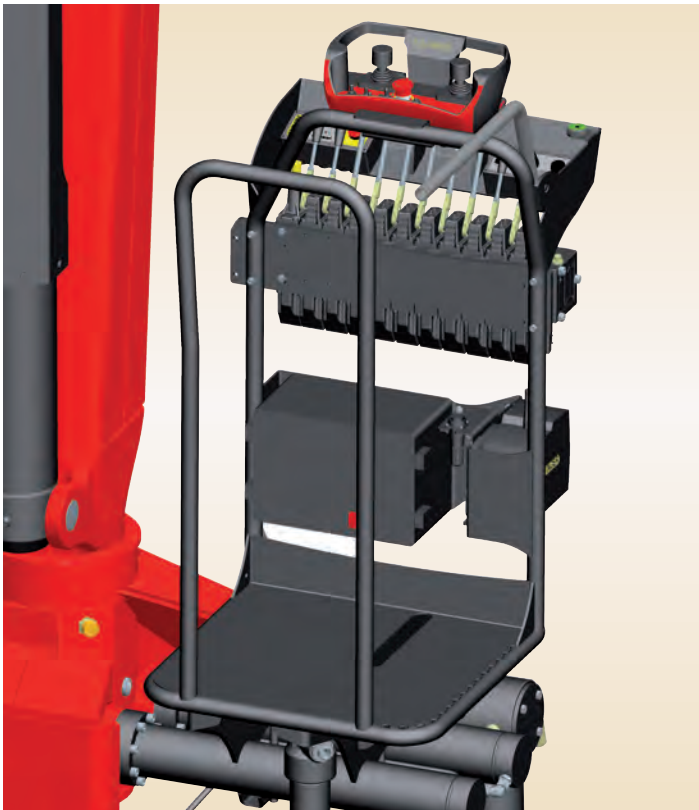


■ invisible "forcefield" around operator area



☐ ground control for main and outer boom on right side

## Stand up with radio remote control



■ SCRC M135L – stand up with manual control and radio remote control Scanreco (6x X, 3x XY, 2x XYZ). Danfoss PVG32 mounted on stand up, invisible safety cage, incl. Paltronic 50, HPLS and safe load indicator



■ control unit, emergency off, hour meter, safe load indicator, overload warning, spot lights on/off, auto RPM

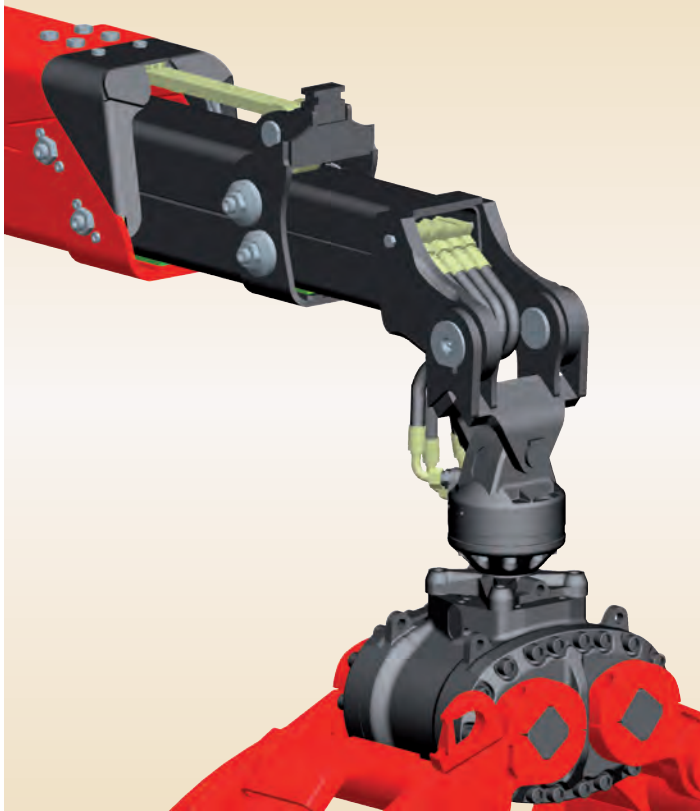


radio remote control operation



manual operation with levers

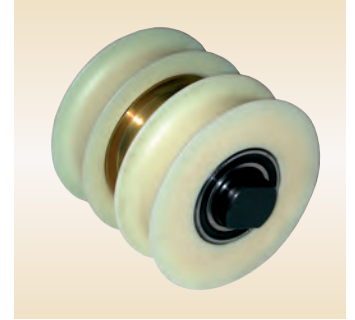
## Double telescopic extension



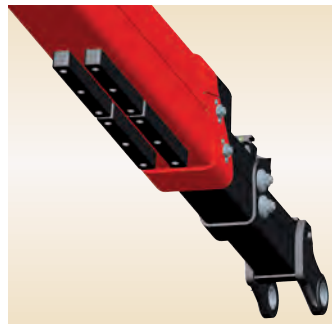
- **double telescopic extension with inlaid protected hoses**
  - high speeds by means of chain drive
  - optimal guidance of telescopic arms due to long boom overlap
  - incl EPSLINK, rotator Kinshofer 4,5 to and hoses mounted



- **single telescopic extension** with internally routed hoses



- maintenance-free **hose and chain rollers** with ball bearings

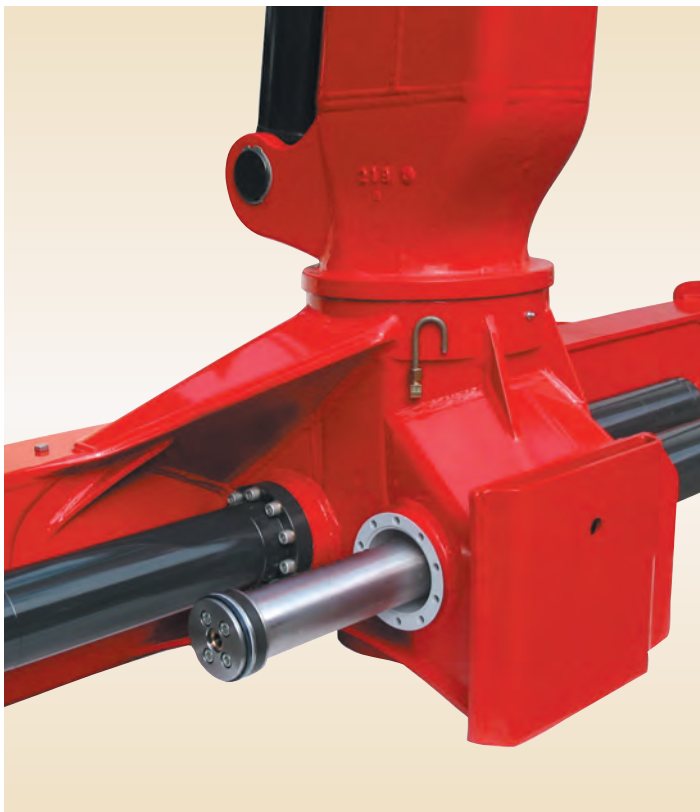


- bump stop on knuckle boom



- work lights on knuckle boom, completely wired

## Crane Base



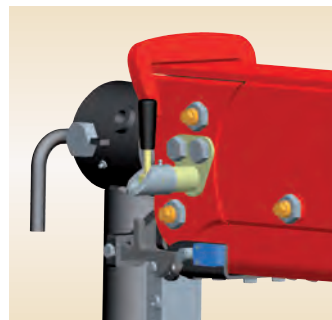
- low mounted **double rack slewing system** in oil bath, two solid round racks, end stroke suppression on all slewing cylinders



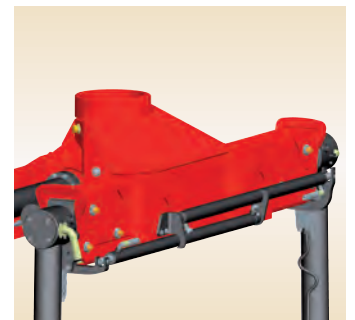
- robust **cast crane column**



- high-quality **self-aligning roller bearings**



- **AM** manually extendable outriggers, incl. legs not stowed warning



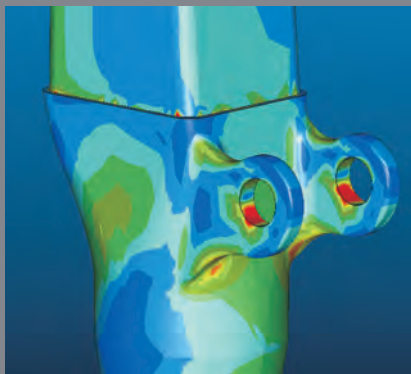
- **RX47, AX2** outriggers 4,7m separately hydraulically extendable



# QUALITY FOR THE FUTURE



**3-D construction** of all components with the latest CAD-system



**FEM-calculation** for robust construction with optimal weight



**Endurance test** on modern test benches by full capacity utilization



**KTL-coating** with burn-in process at 160°C



**Powder coating** with burn-in process at 200°C



Quality in every **RAL colour**



In the **workshop in Elsbethen** near Salzburg EPSILON ON ROAD, OFF ROAD, RECYCLING and CONSTRUCTION cranes as well as STEPA farm, mobile and Tractor cranes produced.



**Just in time production** in a state-of-the-art workshop

## EPSILON Kran GmbH

Christophorusstraße 30  
A-5061 Elsbethen-Glasenbach  
Tel.: +43 (0)662 629548-0  
Fax: +43 (0)662 629548-3  
E-Mail: [office@epsilonkran.com](mailto:office@epsilonkran.com)



[www.epsilonkran.com](http://www.epsilonkran.com)



PR014\_GB  
02/09