



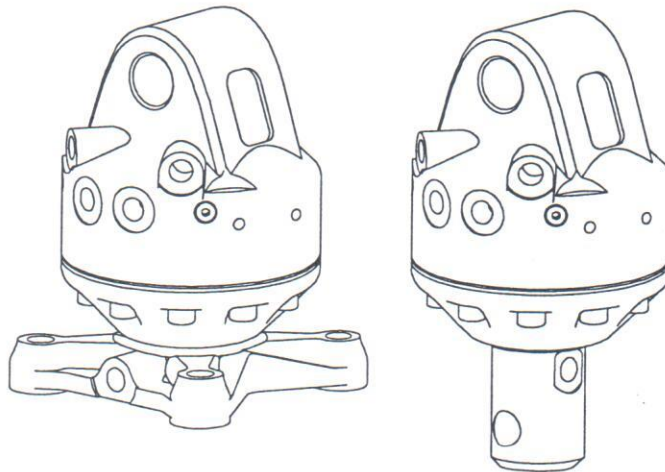
KINSHOFER®

GREIFTECHNIK

Ersatzteil-Katalog
Spare parts list
Liste des pièces de rechange

für / for / pour

Drehmotor / Hydraulic rotator / Rotator hydraulique
KM 04S / KM 04F



Hersteller / Manufacturer / Constructeur

KINSHOFER GREIFTECHNIK GMBH

(June) 22 / 99

DEUTSCHLAND:

**KINSHOFER GREIFTECHNIK
GMBH
MARIENSTEIN**

**HAUPTSTRASSE 76
D-83666 WAAKIRCHEN**

**TEL. 08021/8899-0
FAX 08021/9977**

ENGLAND:

KINSHOFER LIMITED

**4 MILTION INDUSTRIAL
COURT,
HORSFIELD WAY, BREDBURY
STOCKPORT, CHESHIRE,
SK6 2TA**

**TEL. 0161-406-7046
FAX 0161-406-7014**

FRANCE:

KINSHOFER FRANCE

**269, AVENUE DE COLMAR
F-67100 STRASBOURG**

**TEL. 0388 39 55 00
FAX 0388 79 06 75**

USA:

EUROTECH

**1003 McKNIGHT PARK DRIVE
PITTSBURGH, PA 15237**

**TEL. 412/367-1010
FAX 412/367-4519**

6. Spare parts list and drawing

General

This spare part list has been prepared as a guide for exact ordering of spare parts for Kinshofer loaders

The Kinshofer parts manual includes all „on-stock“ - available spare parts.

The list pages (corresponding to the picture charts) include all information necessary for ordering description and storing.

Structure

Pos. Item Repère	Stück Qty. Nbre.	Bezeichnung	Description	Désignation		Bestell-Nr. Order-no. Pièce N°
1	2	3	4	5	6	7

- In column 1 appears the position number of the listed parts
- In column 2 quantity of the listed parts
- In column 3 description of the parts (German)
- In column 4 description of the parts (English)
- In column 5 description of the parts (French)
- In column 6 dimensions of the parts
- In column 7 order number of the parts

Order-conditions

When ordering spare parts please quote order number, quantity and serial number (see type plate)of the attachment.

Kinshofer attachments can be indentified by stamped serial number in body.

Information about position of serial number please find on page 2 (see dimensions, operating instructions).

Type plate



KINSHOFER
Greiftechnik GmbH
Hauptstrasse 76
D-83666 Waaakirchen
Tel. 08021/8899-0

Baujah Year	
Druck max. Pressure	bar
Traglast capacity	kg
Motor-Nr. Serial no.	
Typ model	

Made in German

Note

For further information and assembly notes please refer to the operating manual supplied with each unit.



Drehmotor

Rotator

Rotator

KM 04S

M04AA11S11

M04AA11S22

M04AA11S32

M04AA11S42

M04AA11S52

KM 04F

M04AA11F11

M04AA11F21

Pos. Item Rep	Stück Qty. Nbre..	Bezeichnung	Description	Désignation		Bestell-Nr. Order-no. Pièce N°
1	1	Motorkopf mit Ein- spannbuchse	rotator head with bushing	tête de rotator avec bague		238050488
1	2	Einspannbuchse	bushing	bague	30x35x40	135015119
1.2	2	Einschraubblende	plug	obturateur		235050278
1.3	1	Schmiernippel	grease nipple	graisseur		132000137
1.4	2	Verschlusschraube	screw plug	bouchon fileté		290010671
1.5	2	Druckfeder	pressure spring	ressort de pression		165014396
1.6	2	Ventilkolben	valve plunger	piston de soupape		273012040
1.7	2	Blende	plug	obturateur		280012091
1.8	2	Druckfeder	pressure spring	ressort de pression		165014422
1.9	2	Kugel	ball	bille		166000545
2	1	Lagerdeckel	bearing cap	couvercle de palier		237050295
2.1	10	Zylinderschraube	cap screw	vis à tête cylindrique	M10x40	120012131
	1	Welle KM 04S	shaft KM 04S	arbre KM 04S		
		M04AA11S11			ø 62 / ø 25	244012128
		M04AA11S22			ø 63 / ø 30	244050402
		M04AA11S32			ø 68 / ø 30	244050296
		M04AA11S42			ø 69 / ø 30	244050448
		M04AA11S52			ø 59 / ø 30	244050520
3.1	1	Flanschelle	flange shaft	arbre à bride		
		KM 04F	KM 04F	KM 04F		
		M04AA11F11				244012132
		M04AA11F21				244050441
3.2	2	Verschlusschraube	screw plug	bouchon fileté	M18x1,5	290010872
		nur für	only for	pour seulement		
		M04AA11F21	M04AA11F21	M04AA11F21		

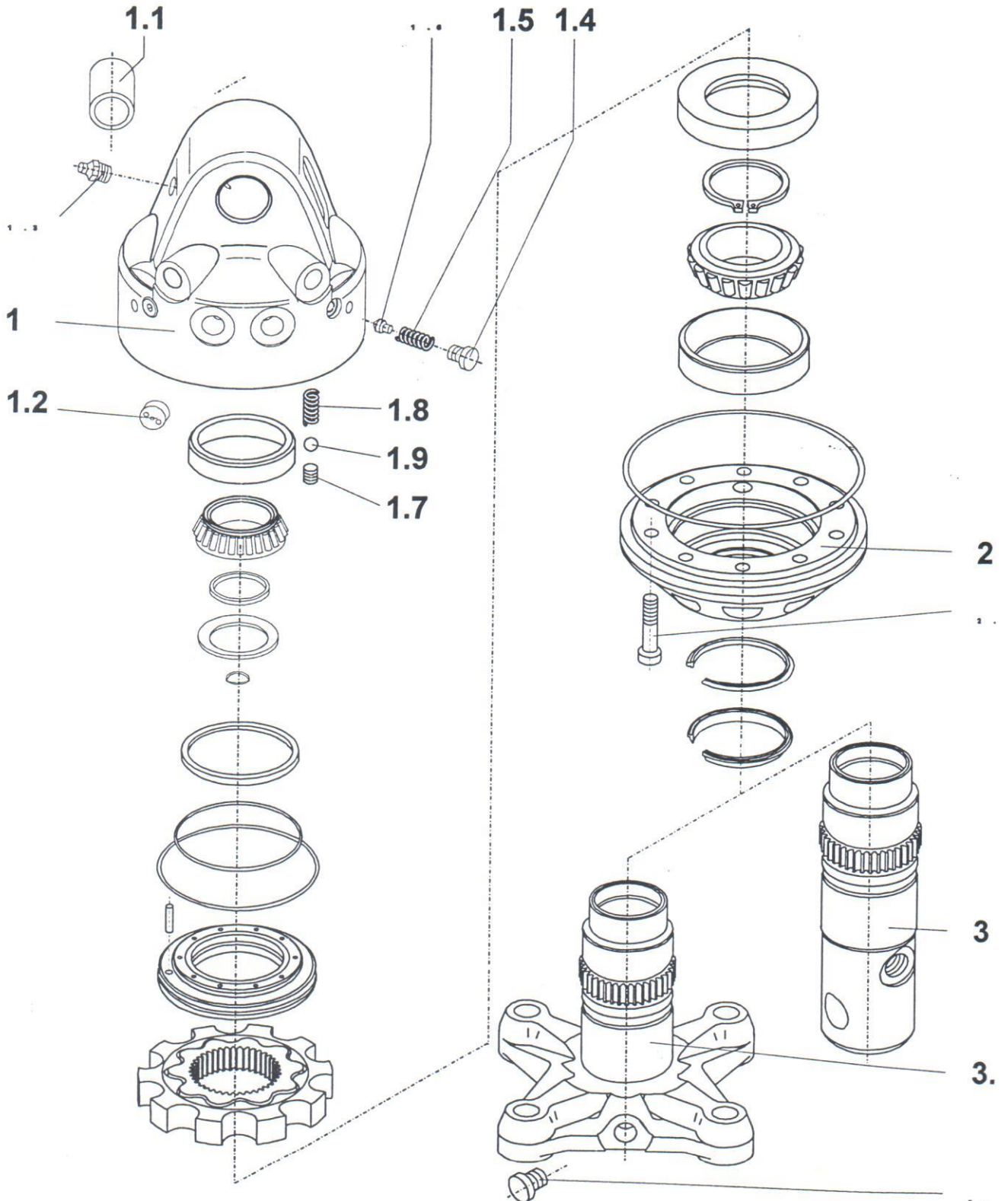


Drehmotor
Rotator
Rotator

KM 04S
M04AA11S11
M04AA11S22

M04AA11S32
M04AA11S42
M04AA11S52

KM 04F
M04AA11F11
M04AA11F21





Drehmotor
Rotator
Rotator

KM 04S
M04AA11S11
M04AA11S22

M04AA11S32
M04AA11S42
M04AA11S52

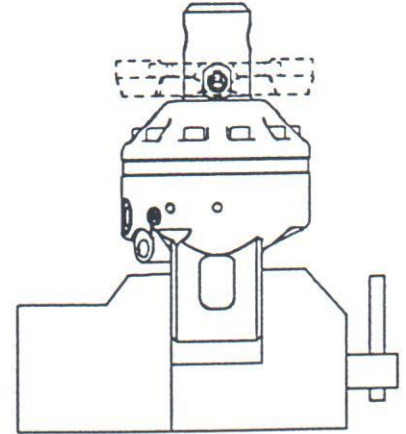
KM 04F
M04AA11F11
M04AA11F21

Pos. Item Rep	Stück Qty. Nbre..	Bezeichnung	Description	Désignation		Bestell-Nr. Order-no. Pièce N°
4	1	Verteilerplatte	load distribution plate	plateau de distribution		243012129
4.1	1	Zylinderstift	straight pin	coupille cylindrique	5m6x24	126014817
5	1	Laufscheibe	disc	disque		247050350
6	1	Rotorsatz kpl.	rotor subassembly	kit rotor cpl.		250100008
7	1	Tellerfeder	disc spring	rondelle resort		165014395
8	1	Kegelrollenlager	taper roller bearing	roulement à rouleaux côniques		170050179
9	1	Kegelrollenlager	taper roller bearing	roulement à rouleaux côniques		170050180
10	1	Sicherungsring	locking ring	circlip	65x4	123014029
11	1	Dichtungssatz kpl.	seal kit cpl.	jeu de joints cpl.		255050361
11.1	1	Kolbendichtung	piston seal	joint de piston	ø 106,2x10	258012066
11.2	1	Kolbendichtung	piston seal	joint de piston	ø 85,2x88	258012067
11.3	1	O-Ring	O-ring	joint torque	ø 150 x 2	257008349
11.4	1	Rotomatic-Dichtung	Rotomatic-seal	joint „Rotomatic“	60x65,5x4,5	261012068
11.5	1	Rotomatic-Dichtung	Rotomatic-seal	joint „Rotomatic“	40x46x5,8	261011904
11.6	1	Rotomatic-Dichtung	Rotomatic-seal	joint „Rotomatic“	15x21x5,7	261010184
11.7	1	Schmutzabstreifer	wiper ring	joint râcleur	65x73x7,0	263011905
11.8	1	Roto-Glyd Ring	Roto-Glyd ring	joint „Roto-Glyd“	65x76x4,2	261050390

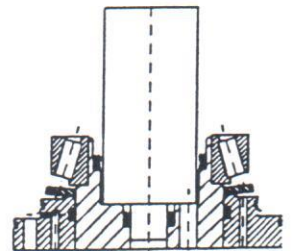
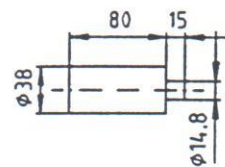
Valid for motortype: KM 04 S / F - 4,5-ton capacity
Model as of June 1999

page 1

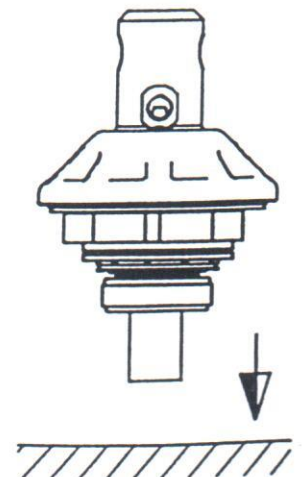
1. Thoroughly clean rotator before disassembly.
2. Place with motorhead (1) upside-down in vice.
3. Loosen and remove cap screw (2.1). Rotators with flange shaft remove only 2 screws, turn by hand to next hole.



4. Remove shaft with complete unit - motor head remains in vice.
5. Place a mandrel in upper end of shaft. The "ROTOMATIC-seal" must remain in shaft, avoiding mandrel coming loose.



6. Now take unit at the flange, with mandrel up-side-down, hitting it on a solid, flat, wooden surface. Due to the inner material mass, taper roller bearing (8) will come loose by itself.
7. Now remove parts (7, 4, 6 and 5) provided they did not fall out already. *Note order of assembly.*

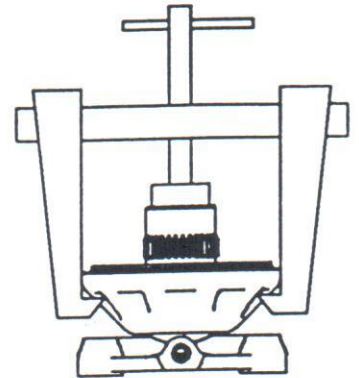




8. With circlip plier remove retaining ring (10).

page 2

9. Rotators with flange shaft (3.1) or spigot diameter 68 and 69, bearing cap (2) with taper roller bearing (9) can be removed with extractor.
Rotators with shaft (3) and spigot diameter 59, 62 and 63, the bearing cap can be pressed down.



10. Remove all seals

Reassembly - take care of the following:

- a) clean all parts
- b) lubricate all parts with hydraulic oil
- c) allowable wear on shafts (3) and (3.1) between u-cup and wiper ring must not exceed 0.1 mm diameter. Excess wear should be machined.
- d) O-rings must be greased for better fit.
- e) watch for correct positioning of disc spring (7), cone pointing upward.
- f) Roto-glyd ring (two parts with o-ring) must be positioned carefully. Kink in the o-ring, smooth out into groove, avoiding crease and bends.
- g) when mounting, watch for correct position of straight pin (4.1) between motor head (1) and distribution plate (4).
Moment of torquet of cap screw (2.1) = 67 Nm.