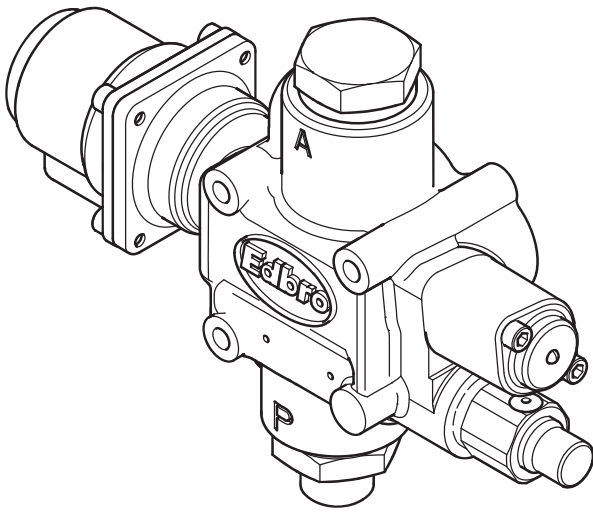
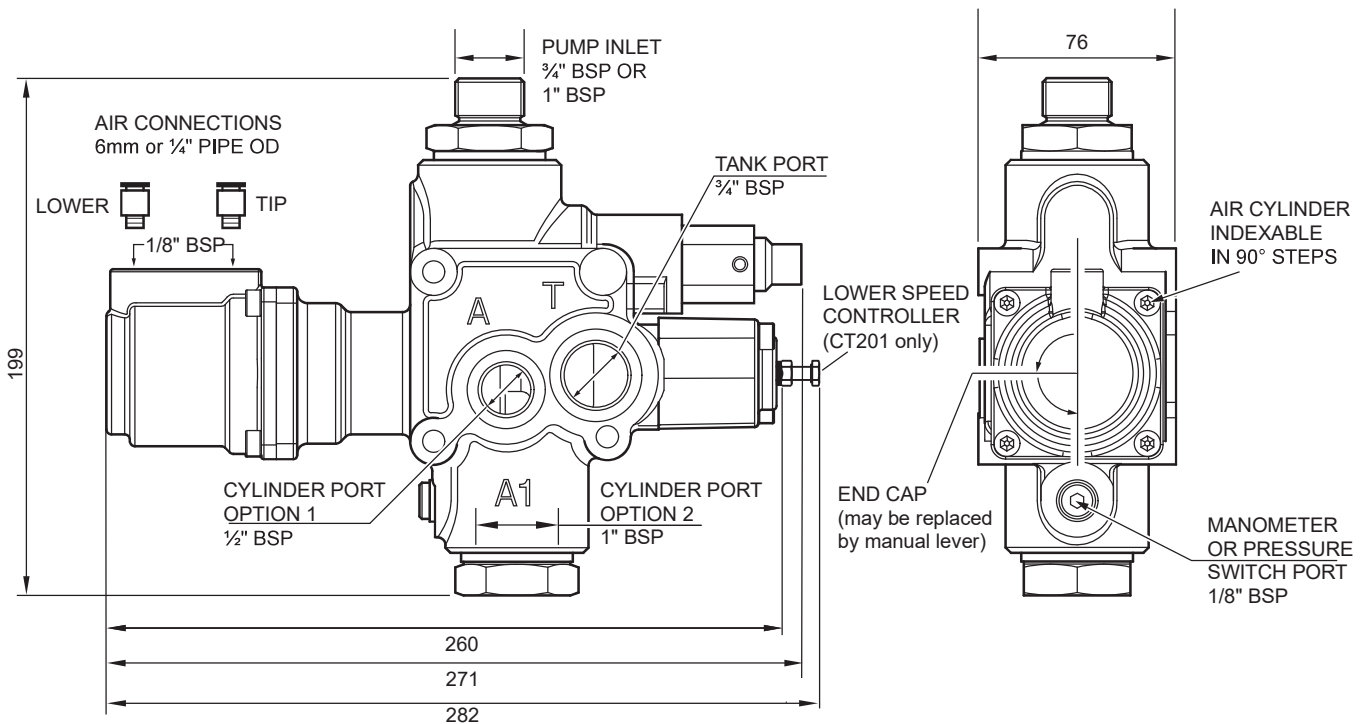


Hydraulic Control Valve for Tipper Applications - CT200/CT201



- Fully proportional - excellent lowering control when loaded
- No system filtration required
- High flow capacity for reduced cycle times
- Compact and lightweight
- Interchangeable with previous VT valve range
- Multiple mounting options
- Pressure switch point provided
- Single pressure or two pressure relief valve cartridges available
- CT201 with adjustable lowering speed is available

Hydraulic Valves



| Part Number | Pump Inlet | Pressure (Bar) |
|--|------------|----------------|
| CT200 | [] | P [] [] [] |
| CT201 (with adjustable lower speed) | [] | P [] [] [] |

M = 6mm air
 E = 1/4" mm air
 075 = 3/4" BSP
 100 = 1" BSP
 90, 120, 135, 150, 165, 175, 200, 220, 250
 000 No cartridge fitted

(Mounting bolts and face O-rings supplied with each valve)

All dimensions are given in mm unless otherwise stated. Technical Specifications are subject to change without notice.

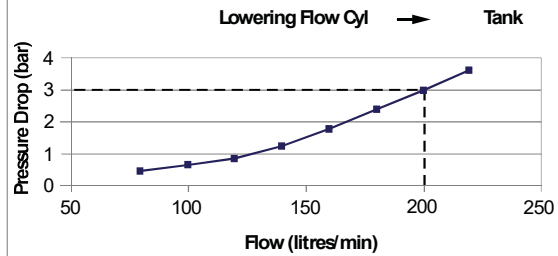
Hydraulic Control Valve for Tipper Applications - CT200/CT201

OPTIONS

| | | | |
|--|--|---|-----------------|
| Relief Valves (Single Pressure) | VC110 <input type="checkbox"/> <input type="checkbox"/> H | VC112 <input type="checkbox"/> <input type="checkbox"/> H | |
| | 090, 120, 135, 150, 165, 175, 200 bar | | 220 - 250 bar |
| Relief Valves (Two Pressure) | VC115 H 150 - 220 bar adjustable VC116 H 150 - 250 bar adjustable | | |
| Manual Lever (Replaces End Cap) | Spring return to neutral Available in vertical (RLA72) or horizontal (RLA73) versions. | | |
| Independent Mounting Kit (Kits Include Plug for Port A) | Port A1 Pipe Connection | Port T Pipe Connection | Kit Part Number |
| | 3/4" BSP | 3/4" BSP | AK91 |
| | 1" BSP | 1" BSP | AK92 |
| Pressure Switch | 1/8" BSP Body Raised Warning Kit (switch + washer + cover + light + buzzer + wiring) | | SA2924 |
| Port P Pump Inlet Elbow Adaptor | 3/4" BSP | | NR627 |
| | 1" BSP | | NR634 |
| Port A1 Outlet Adaptors for Tank Mounting | Pipe Connection | Straight | + Elbow |
| | 3/4" BSP | NR611/27 | NR627 |
| | 1" BSP | NR611/43 | NR634 |

PERFORMANCE

| | |
|---------------------------------------|----------|
| Max. flow from pump | 180l/min |
| Rated return flow to tank (see graph) | 200l/min |
| Maximum relief valve pressure | 250 bar |
| Maximum peak pressure | 350 bar |
| Minimum air pressure | 6 bar |
| Mass | 6 kg |

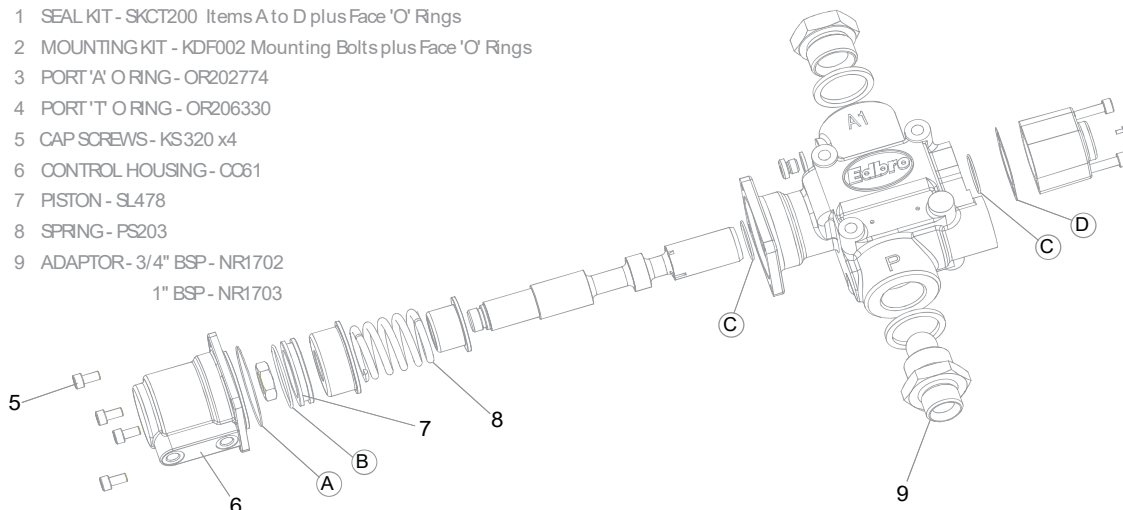


OIL & FILTRATION

- This valve is designed for tipper systems without filtration.
- The oil should be a good quality hydraulic oil to ISO 6743/4 HM32 for -15 to +27 C working temperature.
- For extended life or for higher duty applications, 25µm absolute return line filtration is recommended.
- Oil cleanliness to be maintained to ISO 4406 class 19/16.
- Oil should be replaced annually.

SPARES

- 1 SEAL KIT - SKCT200 Items A to D plus Face 'O' Rings
- 2 MOUNTING KIT - KDF002 Mounting Bolts plus Face 'O' Rings
- 3 PORT 'A' O RING - OR202774
- 4 PORT 'T' O RING - OR206330
- 5 CAP SCREWS - KS320 x4
- 6 CONTROL HOUSING - CO61
- 7 PISTON - SL478
- 8 SPRING - PS203
- 9 ADAPTOR - 3/4" BSP - NR1702
1" BSP - NR1703



All dimensions are given in mm unless otherwise stated. Technical Specifications are subject to change without notice.

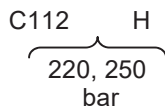
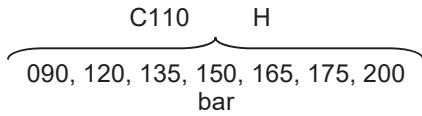
CT200 VALVE: Options & Accessories

Single Pressure Relief Valves

VC110xxxH & VC112xxxH

Replacement cartridges for the standard CT200 single pressure relief valve.

When ordering, use the following part numbers:



Manual Handle

RLA72 90° to valve face

RLA73 In-line with valve

For applications where an air control is not possible, Edbro offer the manual handle as an additional fit.

The end cap is removed and replaced by the manual handle fit.



Dual Pressure Relief Valves

VC115H & VC116H

An adjustable pressure relief valve, designed for tractor unit installations. This relief valve allows the tractor unit to be attached to a range of trailers with cylinders operating at different pressures.

The dual pressure relief valve replaces the single pressure relief valve, and is installed in the same valve fitting.

Two models are available:

C115H: 150/220 bar

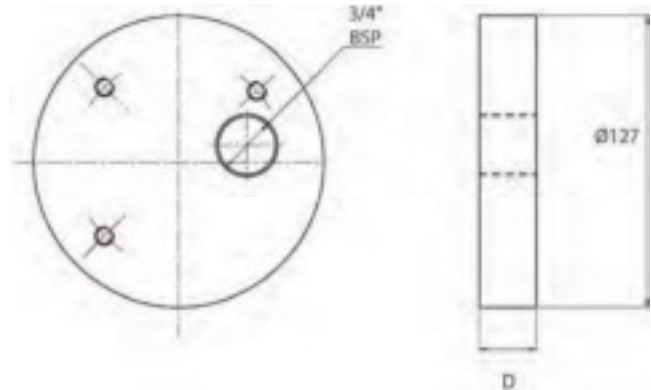
C116H: 150/250 bar

Valve Mounting Blocks

BP227 & BP227/AL

This block is designed for direct mounting of an Edbro CT200 valve. The block is available in steel or aluminium, and is to be welded directly to the oil tank.

Dimension D: Steel - 25mm
Aluminium - 30mm



Pump Inlet Adaptors

NR1969 & NR1697

Two inlet adaptors, allowing different size pipe fittings from the pump to be used:

3/4" BSP Adaptor NR1702

1" BSP Adaptor NR1703

Speed Control Kit

SA2879

When using the valve in pneumatic configuration, this is a replacement end cap which allows the spool stroke to be adjusted using a screw.

By limiting the stroke in this way, return flow through the valve can be limited, thus increasing control over the speed of operation.

All dimensions are given in mm unless otherwise stated. Technical Specifications are subject to change without notice.